



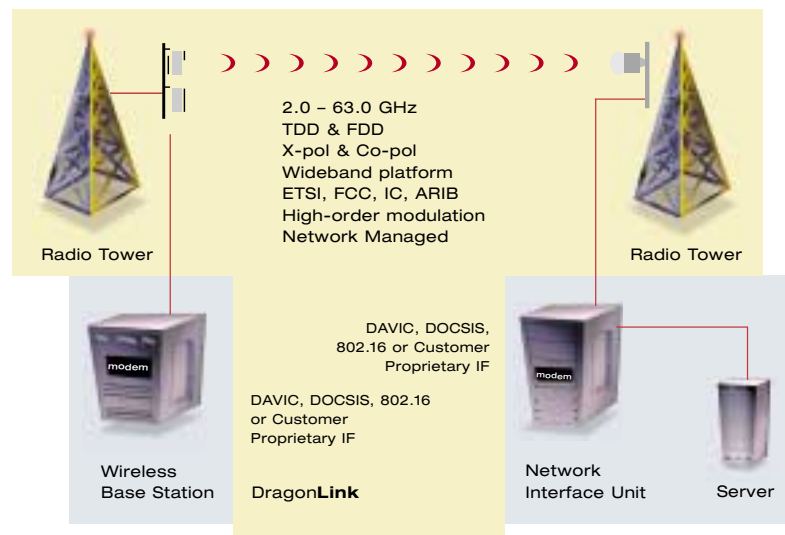
DragonLink™

Broadband Wireless Radios 2.0 – 63.0 GHz

High performance solutions ready to go the distance

High performance, cost-effective DragonLink™ radio solutions provide Broadband Wireless Access integrators with powerful building blocks for a robust fixed broadband wireless network.

The first product offering from the broadband wireless innovators at DragonWave™; DragonLink radios operate in the 2.0 – 63.0 GHz bands.



DragonLink employs the latest MMIC and packaging technology coupled with a low-cost topology to provide a fully optimized solution. The system includes both base station and Customer Premise Equipment (CPE) radios which can be purchased as a set or engineered to interoperate with other radio equipment such as third-party base station radios.



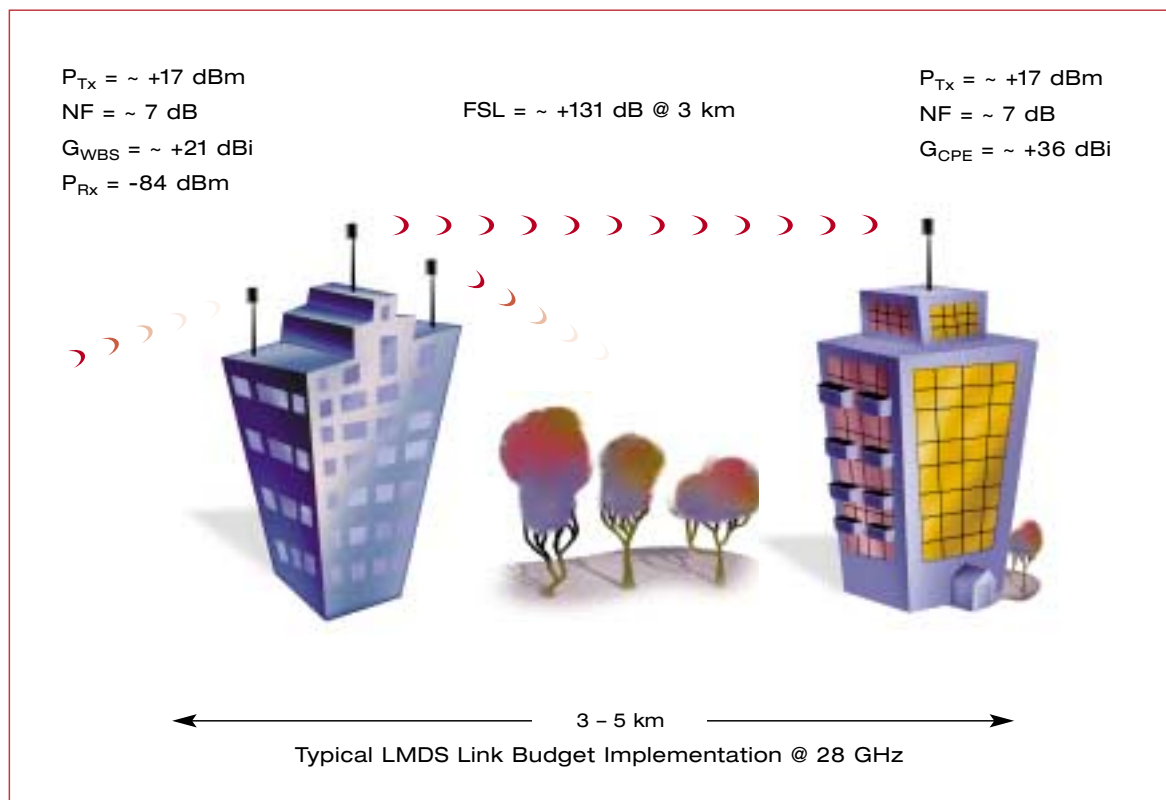
Bold new ideas in broadband wireless

Masterfully designed for easy integration

DragonLink outdoor radio interface with the customers' indoor networking equipment supports either a DOCSIS, 802.16, DAVIC or Proprietary IF interface. The air interface uses FDD or TDD Duplexing with Co or Cross polarization to maximize frequency reuse. DragonLink operates over the bands from 2.0 – 63.0 GHz, adaptable to most licenced band allocations around the world.

The DragonLink radio set employs a novel, rapidly configurable architecture combined with MMIC implementation technology. The result is a very low cost, yet flexible, Out Door Unit (ODU) solution for broadband multipoint applications. DragonLink operates with the integrator-customers' Indoor Network Interface Unit (NIU) or Network Termination (NT), at the CPE end and indoor Base Transceiver Station (BTS) equipment using conventional IF across coaxial mast or rooftop cable runs.

Typical Wireless Loop System Gain

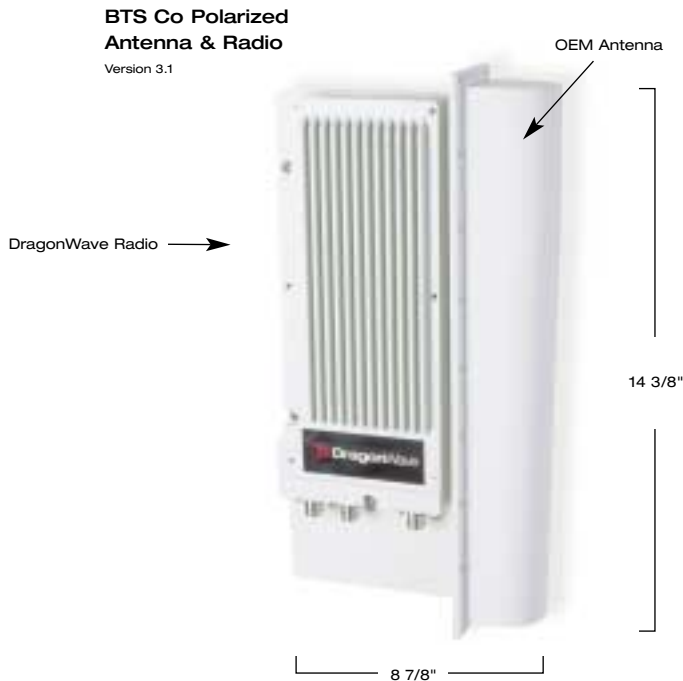


Robust radio for all telecom applications

DragonLink provides a robust radio for use in all telecom access applications—under any environmental conditions. Using a combination of best-in-breed technologies, DragonWave has implemented a highly versatile, cost-effective design, which addresses a wide range of network design topologies.

Radio packaging

Standard antennas are optionally used for both the BTS and CPE. Different configurations of antenna are available with different gain, beamwidth and polarization types. DragonLink is housed in a single package with the antenna for installation on a mast or rooftop. Interconnection to the Network Interface Unit is via standard coaxial wiring.



Shown are photographs of the Base Transceiver Station package and the Customer Premise Equipment package. The radio is powered from standard Telco line-fed voltages ranging from 24 – 36 VDC and –48 VDC. NMS integration/visibility is supported. Maintenance capabilities are provided to test and verify proper operation of all key radio parameters. All elements of the radio are designed to meet national telecom compliance standards.



DragonLink key features:

- 2.0 – 63.0 GHz
- High-order modulation
- Type approvable (ETSI, FCC, IC, ARIB)
- Wideband platform
- Co or Cross polarized
- TDD and FDD operation
- High reliability
- Ease of installation for rapid rollout
- Network manageable (proxies SNMP)
- Compensation for IF cable run lengths
- Operates in harsh outdoor environmental conditions

Contact us today

With robust radio in the 2.0 – 63.0 GHz bands and novel, rapidly configurable architecture, DragonLink is ready to go the distance for all your wireless telecommunications applications.

For additional information on this product or DragonWave's other capabilities, contact us today.





DragonWave

DragonWave Inc.

Suite 600, 411 Legget Drive, Ottawa, ON Canada K2K 3C9

Tel.: (613) 599-9991 Fax: (613) 599-4225

E-mail: info@dragonwaveinc.com

www.dragonwaveinc.com