

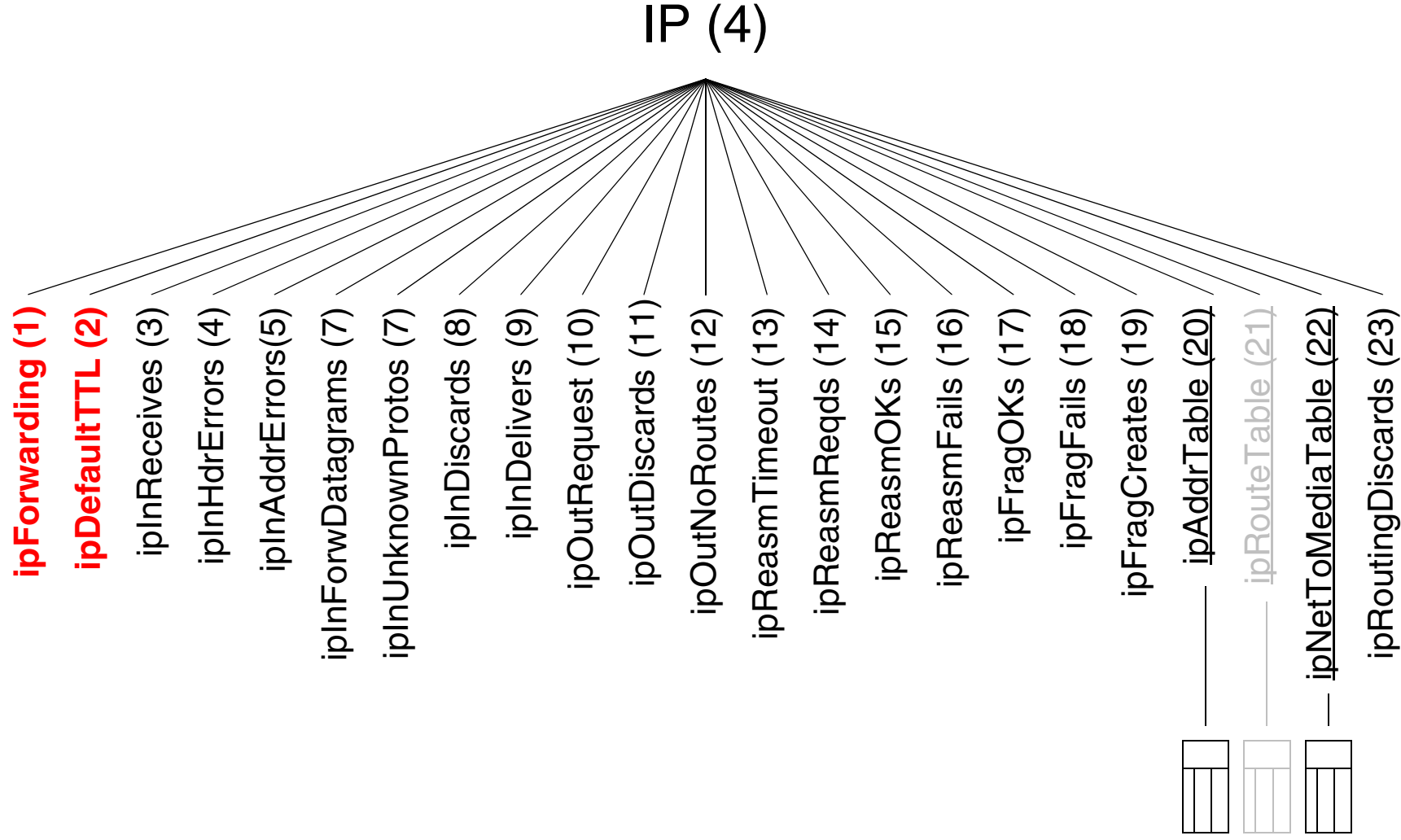
# IP MIB

## RFC 2011

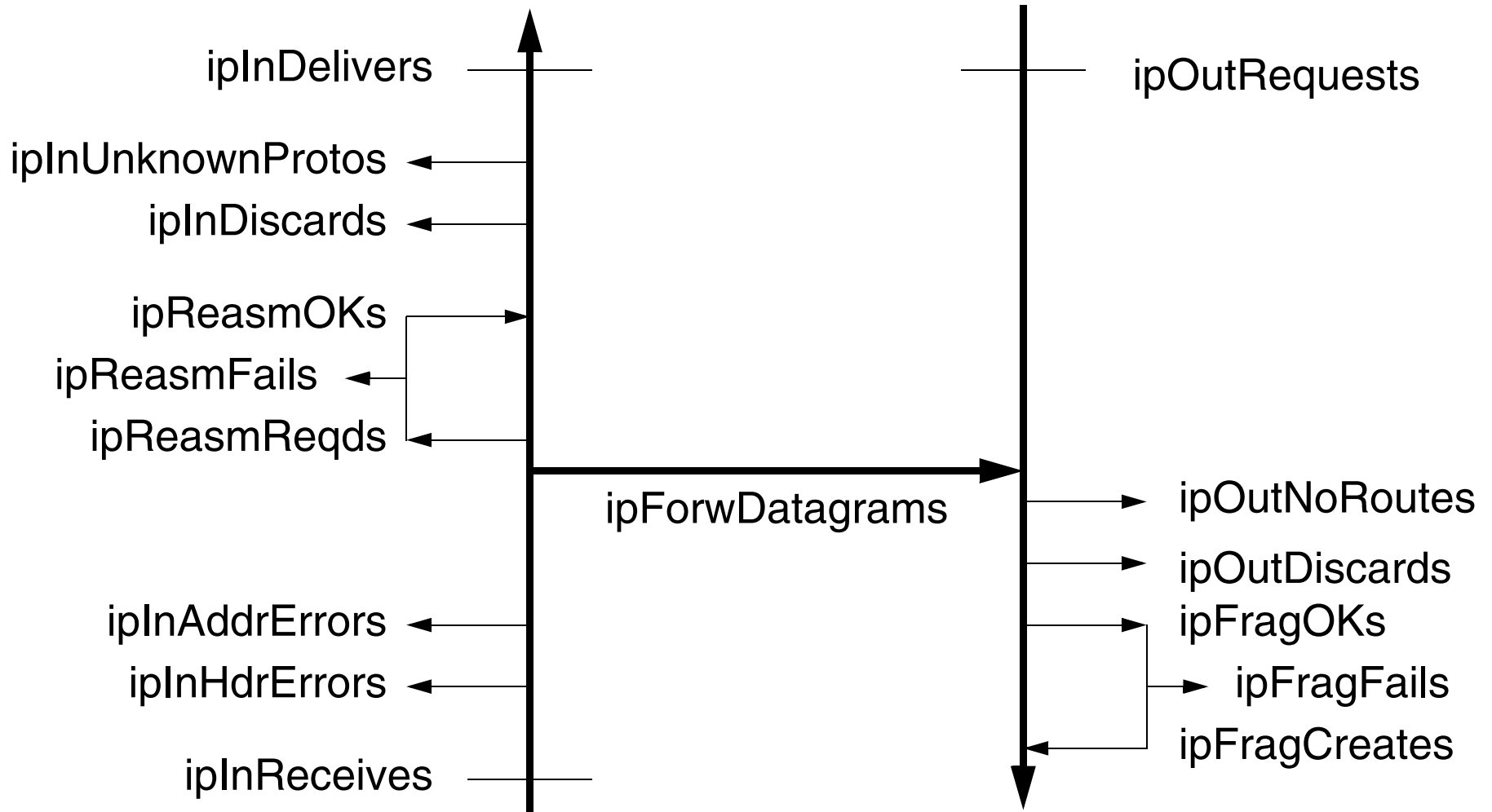
### PROPOSED STANDARD

- IP GROUP
- ICMP GROUP
- IP MIB Conformance

# IP GROUP



# IP PACKET COUNT



## ipAddrTable

ipAdEntAddr	ipAdEntIfIndex	ipAdEntNetMask	ipAdEntBcastAddr	ipAdEntReasmMaxSize
192.89.16.4	1	255.255.255.0	1	65535
192.89.16.8				

## ipNetToMediaTable

<b>ipNetToMedia IfIndex</b>	<b>ipNetToMedia PhysAddress</b>	<b>ipNetToMedia NetAddress</b>	<b>ipNetToMedia Type</b>
1	08:00:20:00:25:66	129.14.16.4	3 (dynamic)
2			

## ipRouteTable of MIB-II

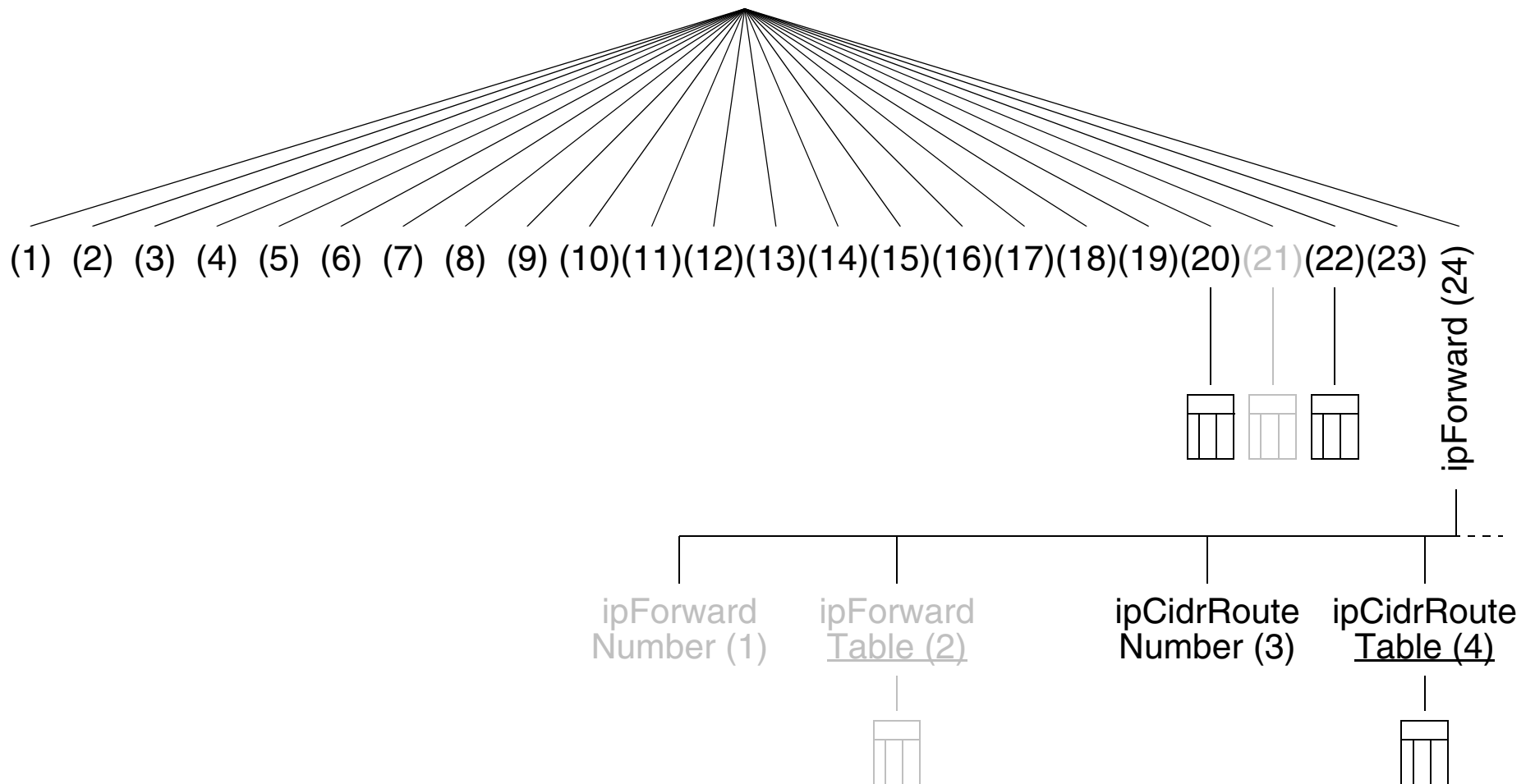
<b>ipRouteDest</b>	<b>ipRouteNextHop</b>	<b>ipRouteIndex</b>	<b>ipRouteMask</b>	<b>ipRouteType</b>	<b>ipRouteMetric1</b>	<b>ipRouteMetric2</b>	<b>ipRouteMetric3</b>	<b>ipRouteMetric4</b>	<b>ipRouteMetric5</b>	<b>ipRouteAge</b>	<b>ipRouteProto</b>	<b>ipRouteInfo</b>
129.14.16.4	129.16.1.7	1	255.255.0.0	3							ospf	● →
												● →
192.89.16.8												● →

NOT INCLUDED IN IP-MIB

# IP Forwarding MIB

RFC 2096

IP (4)



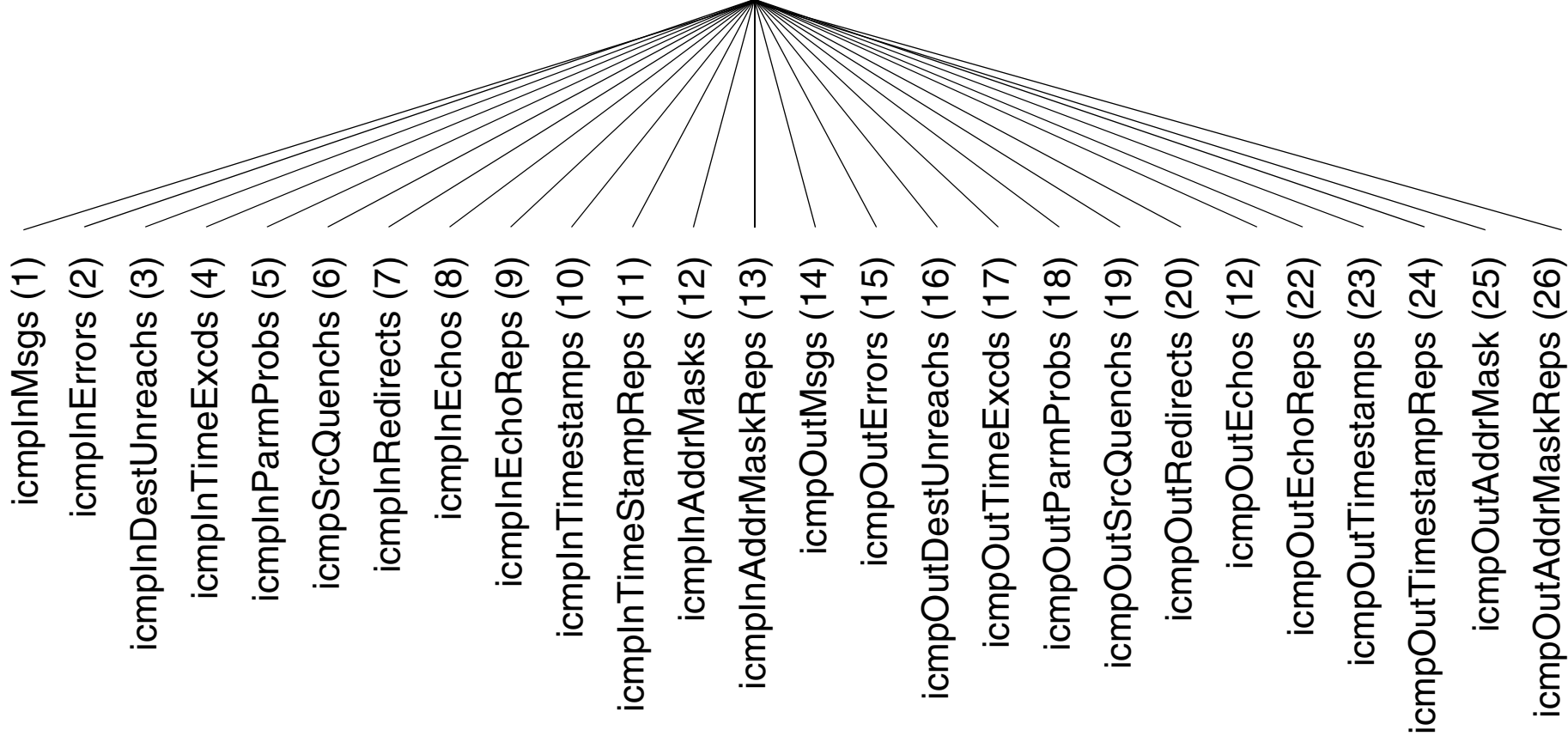






# ICMP GROUP

## ICMP (5)



# ICMP PACKET COUNT

COUNTS FOR EACH ICMP MESSAGE TYPE HOW OFTEN IT HAS BEEN:

- TRANSMITTED
- RECEIVED

