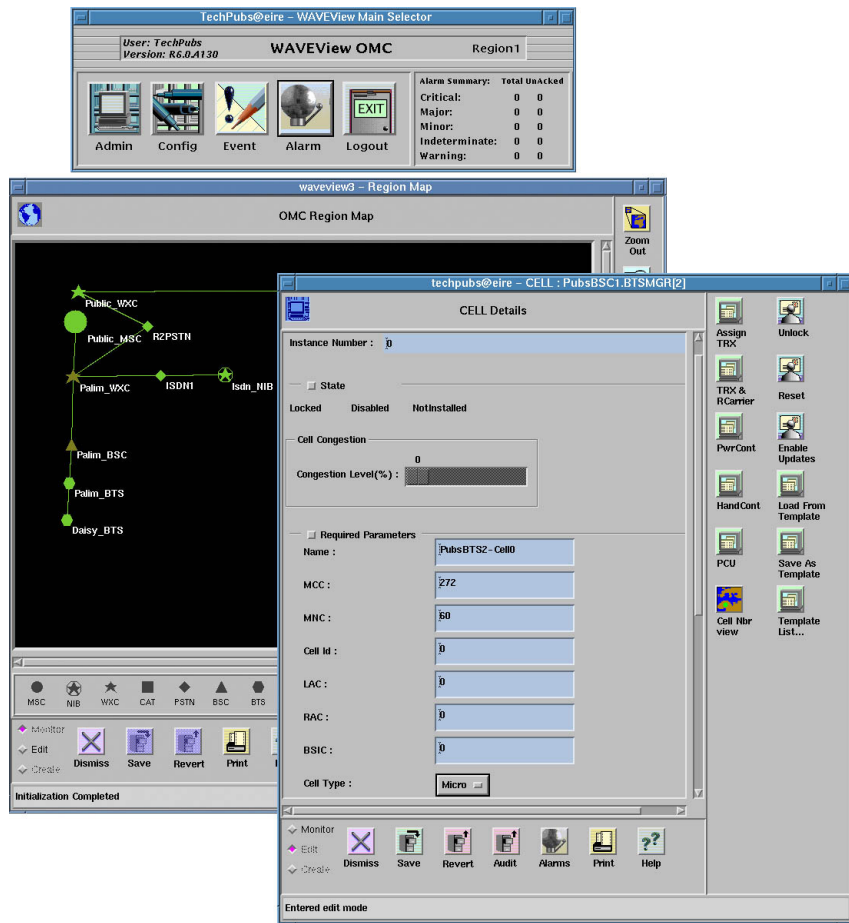




The mVIEW OMC is a portable version of the operations and maintenance center (OMC) for interWAVE wireless network components. It enables operators to configure, control and maintain 850MHz, 900 MHz, 1800MHz or 1900 MHz networks using a Graphical User Interface (GUI), all from a portable UNIX computer, the size of a modern day laptop.

It is ideal for the mobile user who wishes to operate a network built in to a truck or van. Alternatively, for lab uses where space is at a premium and the traditional tower plus monitor would take up too much space.

The OMC graphical user interface (GUI) is a central control that allows users to examine, configure, and modify the interWAVE BSS and NSS network elements. The convenient Region Map displays network elements as icons together with the major Abis, A, and trunk interfaces.



The OMC provides a number of different functions for interWAVE products including:

- Communication interface to the interWAVE products
- Network configuration management
- Alarm management
- Off site alarm paging
- Event logging
- User management and access control
- Performance statistic collection and export management
- Cell broadcast server
- Subscriber management (NSS only)
- CDR collection and export (NSS only)

The OMC client-server architecture and object-oriented technology provide a robust platform that meets both the current and future demands of managing a wireless network. The mVIEW OMC servers run Sun Solaris operating system with an Oracle database.

Northbound interfaces to 3rd party NMS equipment for alarms, performance statistics and configuration parameters are provided in ASCII format.

The mVIEW OMC provides proprietary compliance to the following recommendations:

X.700, X.701, X.710, X.720, X.730, X.731, X.733, X.734, X.735, GSM 12.04, and GSM 12.05.

mVIEW OMC

The table below lists all the current mVIEW configurations:

IWV Product	IWV- Part #	Description	Capacity	Typical Application
OMC-R Client/Server	M640652	Naturetech 747S laptop.	Up to 50 TRXs.	1) For mobile networks. 2) Lab networks.
OMC-R/S Client/Server	M640651	Naturetech 747S laptop.	Up to 50 TRXs.	1) For mobile networks. 2) Lab networks.

U.S. HEADQUARTERS

2495 Leghorn Street
Mountain View, California 94043, USA
Tel: +1.650.314.2500
Fax: +1.650.967.3966

AMERICAS

Iturbe #1442 esquina Abay 1er Piso
Asuncion, Paraguay
Tel: +595.21.37.24.01
Fax: +595.21.37.24.01

EUROPE

ZI Paris Nord II, Immeuble le Sisley, 2eme etage
23, Allée des Impressionnistes - BP 50295
95 958 Roissy CDG Cedex
Paris, France
Tel: +33.14938.9191
Fax: +33.14938.9190

Intec 2.5
Wade Road, Basingstoke
Hampshire, RG24 8NE, United Kingdom
Tel: +44.1256.777580
Fax: +44.1256.777585

ASIA/PACIFIC

Room 2102, 21/F
Jingtai Tower
24 Jianguomen Wai Street
Chaoyang District
Beijing 100022, China
Tel: +86.10.6515.7501
Fax: +86.10.6515.7502

Tech Centre, Unit 316
72 Tat Chee Ave
Kowloon Tong
Hong Kong
Tel: +852.2574.1922
Fax: +852.2519.9033

1100, 88 Corporate Center
Sedeno cor. Valero Sts.
Salcedo Village
Makati City 1227, Philippines
Tel: +632.754.8029
Fax: +632.754.8028

Lincoln House
Cinnamon Garden Residencies 1/7
67, Ward Place
Colombo 07, Sri Lanka
Tel: +94.1.662.164
Fax: +94.75.368.281



*For further information on interWAVE,
please visit us at: www.iwv.com*

©2003 interWAVE. All rights reserved.
The interWAVE logo is a trademark,
and WaveNet is a registered trademark
of interWAVE. Each trademark,
tradename or service mark of any other
company appearing in this document
belongs to its holder.

Specifications subject to change without notice

This product is designed for professional installation only

See www.iwv.com for the latest version of this data sheet

Effective Date: June 2003