

Multi-Service Broadband Wireless Access Solutions

Convergence of Microwave and Networking Technologies

2001 Investor & Analyst Briefing, Melbourne, Florida USA, March 1 - 2, 2001



Harris' wireless solutions enable high-capacity voice, video and data traffic to be seamlessly transported over short and long distances, overcoming traditional network limitations and allowing progressive organizations to communicate more efficiently and reliably than ever before.

With the convergence of microwave and networking technologies, the expansion of telecommunication networks over wireless links, particularly to remote locations, is becoming a price-competitive communications option for many wireless network operators and enterprises. Microwave links represent an excellent, cost-effective alternative to deploying fiber or cables. This highly flexible technology can be used to transparently interconnect several, geographically dispersed buildings, as well as deliver a broad range of value-added Internet services to end users.

Harris ClearBurst™ Broadband Wireless Access solutions have the capability of multiplexing different types of traffic over the air with the guaranteed Quality of Service (QoS) appropriate for each customer Service Level Agreement (SLA).

ClearBurst™ is designed to be a great solution for different business cases including:

- Small Office and Home Office (SOHO)
- Medium and Large Organizations
- Traditional Telephony Service Providers (PSTNs)
- Application Service Providers (ASPs)
- Internet Service Providers (ISPs)
- Traffic Carriers
- Building Local Exchange Carriers (BLECs)
- Competitive Local Exchange Carriers (CLECs)

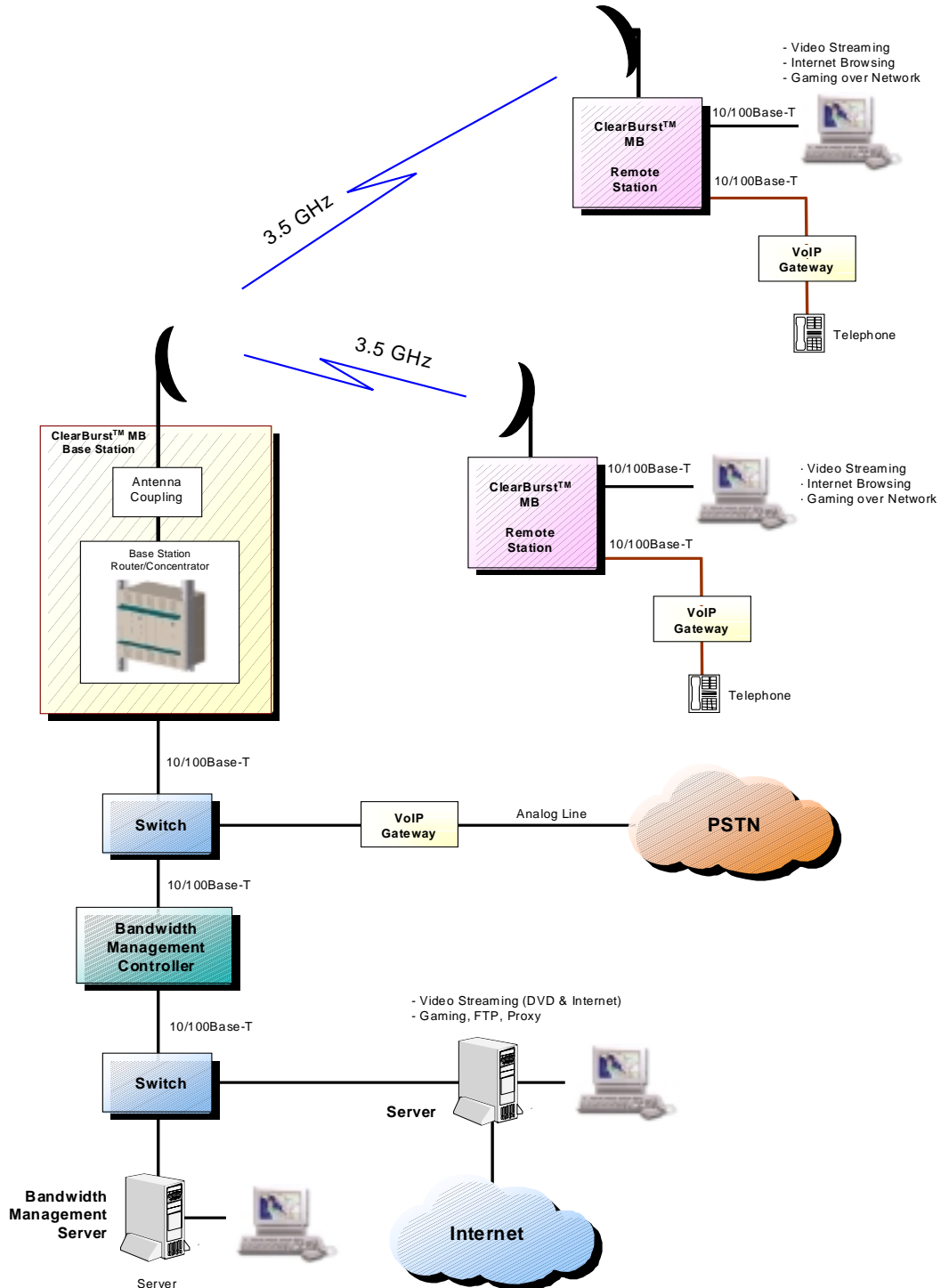
The Solution

The Networks represented in the diagrams are comprised of several different network and telecom components. These are used to carry traffic between different locations and provide access to software applications running on a remote server. The following elements form part of the network:

- Broadband Wireless Access (BWA), Point-to-Multipoint Microwave System, used to Provide Broadband Service to Remote Subscribers
- Application Server located in the Multi-Service Provisioning Center
- Ethernet Switch
- Bandwidth Management Controller/Server
- VoIP Gateway
- Integrated Access Device
- Multiplexer
- Access Server

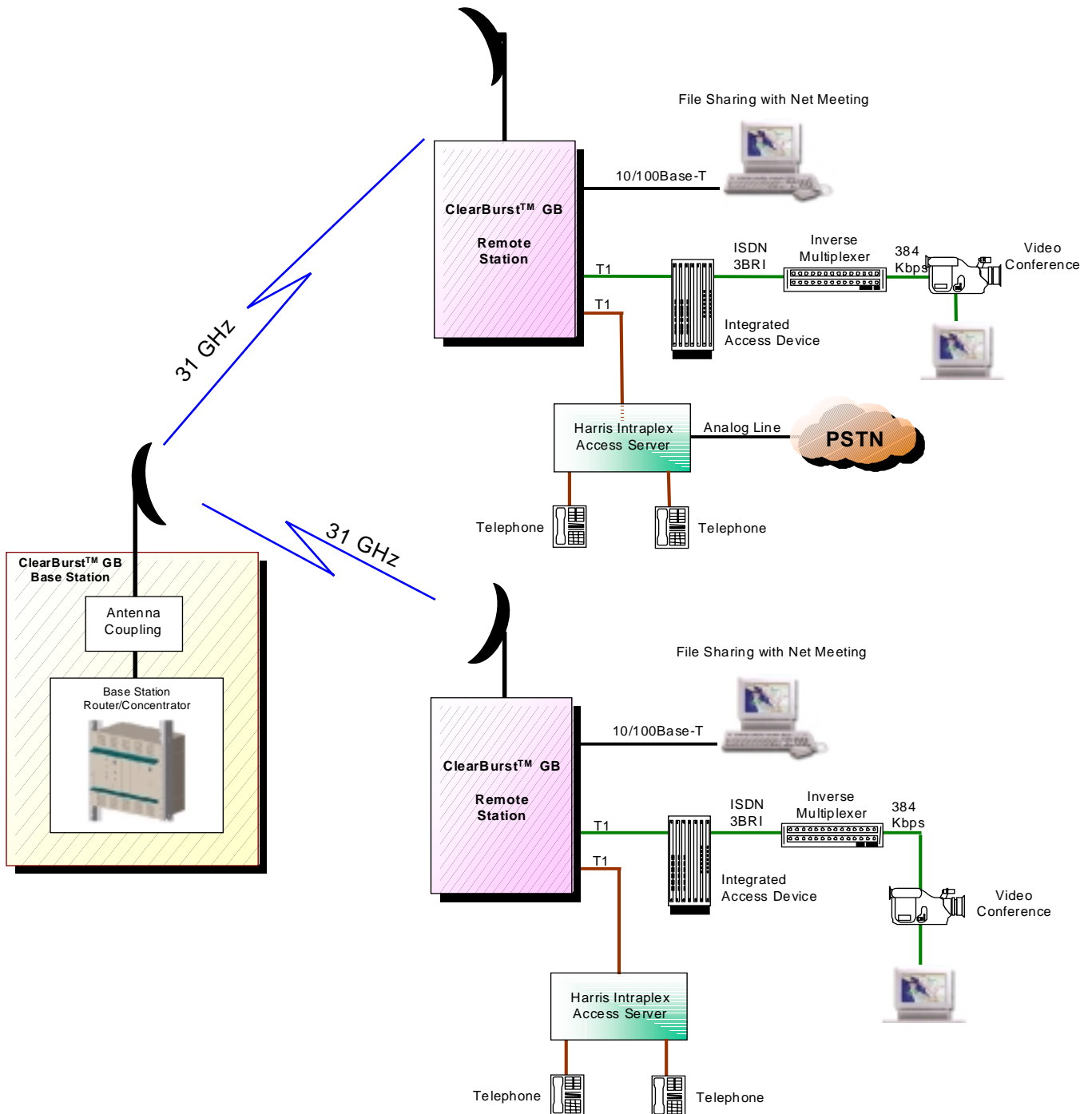


The core network enables several applications such as video streaming, VoIP, data and gaming. Harris' system integration capabilities enables inter-operability between the BWA equipment, Ethernet interfaces and Multiplexing equipment.





Complete networking solutions enabling videoconferencing via Inverse Multiplexer, Integrated Access Device and file sharing with net meeting applications as well as voice over T1.





**Offices & Operations
in North America**

- ATLANTA, GEORGIA, USA
- CALGARY, ALBERTA, CANADA
- LOS ANGELES, CALIFORNIA, USA
- MIAMI, FLORIDA, USA
- MONTREAL, QUEBEC, CANADA
- SAN ANTONIO, TEXAS, USA
- SAN FRANCISCO, CALIFORNIA, USA
- SEATTLE, WASHINGTON, USA
- WASHINGTON, D.C., USA

Offices & Operations in other Countries

- BUENOS AIRES, ARGENTINA
- SAO PAULO, BRAZIL
- BEIJING, CHONGQING, HONG KONG,
SHANGHAI, SHENZHEN, XIAN, CHINA
- BOGOTA, COLOMBIA
- PARIS, FRANCE
- ATHENS, GREECE
- BEIRUT, LEBANON
- KUALA LUMPUR, MALAYSIA
- MEXICO CITY, MONTERREY, MEXICO
- MANILA, PHILIPPINES
- BUCHAREST, ROMANIA
- MOSCOW, RUSSIA
- RIYADH, SAUDI ARABIA
- JOHANNESBURG, SOUTH AFRICA
- MADRID, SPAIN
- BANGKOK, THAILAND
- LONDON, UNITED KINGDOM