



# Clarent® Gateway 800

Clear. Flexible. Proven.

**Clarent Gateway 800** provides superior clarity, scalability and flexibility to deliver reliable connectivity between an IP telephony network and the Public Switched Telephone Network.



## Tomorrow's Internet telephony solution. Available today.

The Clarent Gateway 800 is a key member of the Clarent Gateway family of Internet telephony servers for voice, real-time fax and data communication between IP networks and the Public Switched Telephone Network (PSTN). The Clarent Gateway 800 is fully interoperable with the Clarent Command Center for user authentication, complete billing, call routing and network administration. High scalability, maximum flexibility, optional PSTN fallback availability, and standards-based management support combine to deliver top tier performance, making the Clarent Gateway 800 the product of choice for providing the next generation of voice services.

## Connect. Manage. Scale.

**Universal ports** – All ports on the Clarent Gateway 800 are capable of handling voice, real-time fax, and data traffic transparently, enabling you to deploy cost-effective value-added services with maximum flexibility.

**Voice quality** – The Clarent Gateway 800 provides crystal clear, toll-quality voice transmission by using a unique combination of digital signal processor (DSP) and host-based processing and industry-standard G.168 echo cancellation.

**Scalability** – The Clarent Gateway 800 is available from 1 span to 8 span configurations, and can be stacked to achieve the desired port capacity. Up to 240 simultaneous calls can be active in one gateway.

**Standards-based** – The Clarent Gateway 800 supports multiple audio codecs, including G.711, G.723.1, and G.729a, and provides seamless connectivity with the PSTN via various signaling protocols, including SS7/C7, ISDN-PRI, T1/E1 and Q.931.

**Flexibility** – Clarent Service Editor, a powerful interactive voice response (IVR) toolbox, allows comprehensive customization of the voice interface. The Clarent Gateway software supports single-stage and multi-stage dialing plans, multiple languages, and advanced subscriber services.

**Reliability** – The Clarent Gateway 800 is a rugged industrial platform, with an N+1 redundant power supply. It also provides an optional PSTN fallback to ensure call completion if the IP network is unavailable.

**Easy manageability** – With standards-based network management support (SNMP and MIB-II), Clarent products can be easily integrated into telecommunications management network environments. Clarent Gateways support SNMP v1 with a comprehensive management information base (MIB). Service providers can set parameters, poll devices for performance statistics and status information, and receive alarms if faults occur. Log files kept on the Clarent Gateways can be streamed to a customer-defined IP address for centralized diagnostics analysis and troubleshooting. Network administrators can view and control gateways remotely from any Clarent Gateway Controller-enabled Windows™ NT computer, and this powerful client application allows the viewing of port statistics and the convenient remote management of ports.

**Bandwidth management** – Clarent Gateway 800 can provide significant cost savings through efficient bandwidth utilization, using audio compression codecs such as Clarent ThroughPacket™. Clarent ThroughPacket technology minimizes dropped or lost packets in the network and achieves substantial reduction in required bandwidth availability, while maintaining high audio quality.

---

Universal ports for voice, fax and data

---

Scalable capacity in a compact chassis

---

Superior audio quality

---

Multiple voice compression options

---

Complete signaling protocols support

---

Real-time fax, including standards-based T.38 fax relay

---

Advanced dialing plan options

---

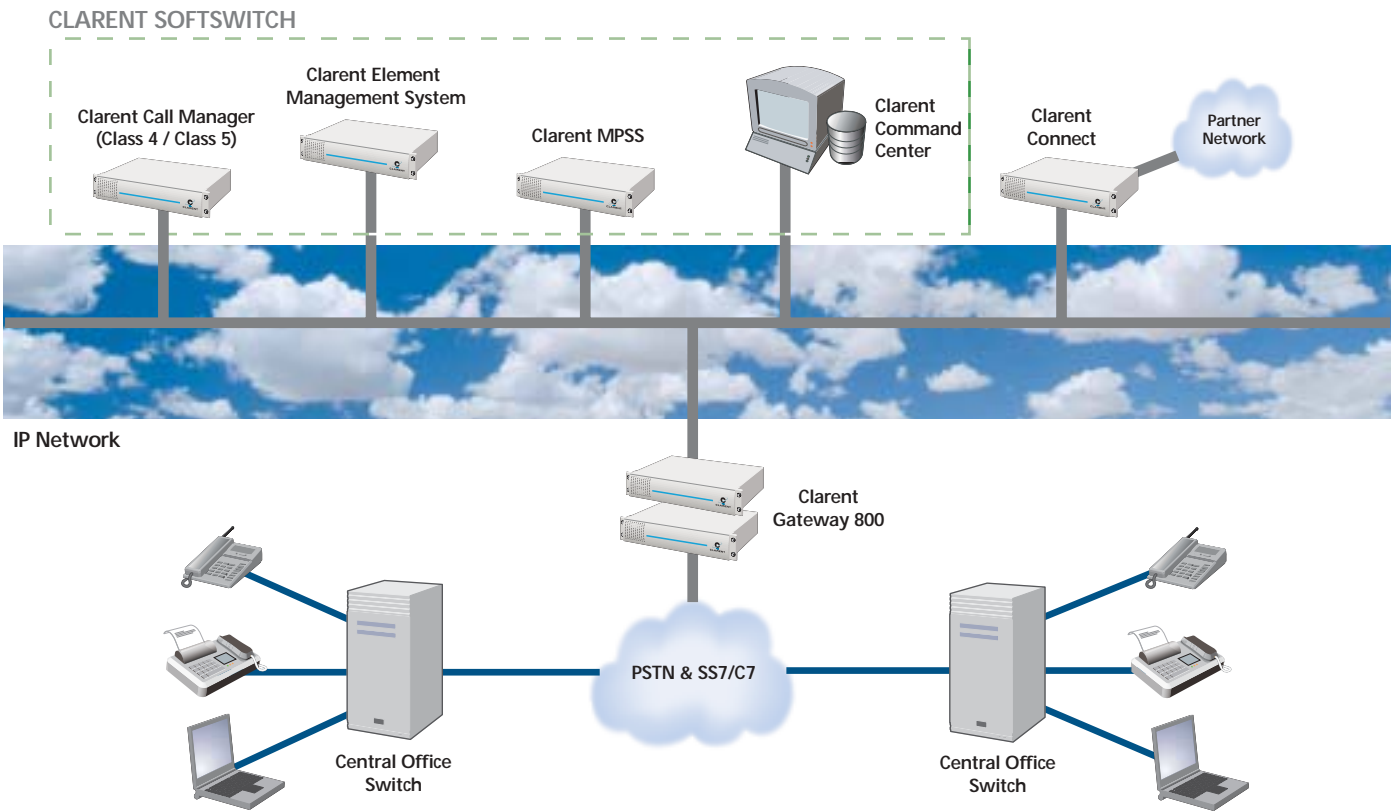


**CLARENT®**



## Specifications

<p><b>CPU</b> Dual Intel Pentium III 733MHz processor with 512MB RAM</p> <p><b>Telephony Interface</b> Up to eight digital T1/E1 interfaces or 32-port analog POTS lines Optional BNC connections for 75 Ohm E1</p> <p><b>Signaling Protocol</b> ISDN-PRI: USNational-2, ETSI EuroISDN, AT&amp;T 4ESS, AT&amp;T 5ESS CAS: Wink Start, MFC-R2 (many country variants), DID, Loop Start, Feature Group D, SS5 SS7/C7: ITU, ANSI</p> <p><b>Ethernet Connection</b> 10/100BaseT network interface card with RJ-45 connector</p> <p><b>Chassis</b> Heavy-duty steel Rack mountable (some additional equipment required). 19" W x 21" D x 8 3/4" (2U) H Weight approx. 40 lbs.</p>	<p><b>Environment</b> Operating temp: 0° to 40°C Humidity: 10% to 80%</p> <p><b>Power Supplies</b> N+1 hot-swappable, 400W 115VAC 60Hz 10A maximum, or 230VAC 50Hz 5A maximum</p> <p><b>Alarms</b> Temperature, fan failure, hard drive and power supply failure</p> <p><b>Cooling</b> 2 high-volume chassis fans, 46 CFM each</p> <p><b>Drives</b> EIDE hard drive CD-ROM EIDE drive Floppy disk drive</p> <p><b>Keyboards and Mouse</b> PS/2 keyboard and mouse</p>	<p><b>Video</b> Industry standard SVGA connection</p> <p><b>Required Connections</b> PBX or PSTN connection 10/100BaseT Ethernet connection with RJ-45 cat-5 cable</p> <p><b>Customer Supplied Optional Equipment</b> Rack mount SVGA monitor and cable Rack mount keyboard/trackball UPS/Battery backup</p> <p><b>Included Software</b> Clarent Gateway 800 software Microsoft Windows NT Server 4.0 Symantec PCAnywhere</p> <p><b>Other Products Required for Operation</b> Clarent Command Center Database server (requires Oracle™ Server, MS SQL Server™, or other ODBC-compliant database)</p>
--	---	--



[www.clarent.com](http://www.clarent.com)



**CORPORATE HEADQUARTERS**  
700 Chesapeake Drive  
Redwood City, CA 94063 USA  
Tel. 1 888 CLARENT, (1 888 252 7368)  
1 650 306 7511  
Fax 1 650 306 7512  
Email: sales@clarent.com

**ASIA PACIFIC**  
Hong Kong  
Tel. 852 2587 8862  
Fax 852 2157 0388  
Email: sales.hk@clarent.com

**EUROPE, MIDDLE EAST, AFRICA**  
Milton Keynes, UK  
Tel. 44 1908 306 500  
Fax 44 1908 306 501  
Email: sales.eu@clarent.com