

Clarent® Gateway 400

Clarity. Flexibility. Scalability.

The
Clarent Gateway 400
is the next generation
Internet telephony
gateway for crystal
clear, worldwide voice
and real-time fax
over the Internet or
a TCP/IP intranet.



Universal ports for voice, fax
and data

Superior voice quality

Advanced signaling protocols
with SS7/C7 and PRI-ISDN support

Worldwide connectivity with T1,
E1 and PBX support

Standards-based network
management

Scalable and stackable

Optional PSTN fallback

Voice. Fax. Data.

The Clarent Gateway 400 handles voice, real-time fax and data traffic with unmatched efficiency and delivers top tier performance and maximum flexibility to service providers. The Clarent Gateway 400 fully interacts with the Clarent Command Center for across the board billing, call routing and network administration. Optional PSTN fall back availability, standards-based management support and easy integration make the Clarent Gateway 400 the technological next step in Internet telephony.

Scale. Manage. Integrate.

Voice quality – The Clarent Gateway 400 uses a unique combination of DSP and host-based voice processing and employs industry-standard G.168 echo cancellation for crystal clear, toll-quality voice transmission. Clarent ThroughPacket™ technology minimizes dropped or lost packets in the network and substantially increases router efficiency.

Universal ports – All ports on Clarent Gateways can handle voice, real-time fax, and data traffic transparently giving service providers maximum flexibility connections.

H.323 standard-based – Clarent Gateways support G.711, G.723.1, and G.729a codecs as well as Q.931 signaling and RTP media streaming.

Scalability – 24-port to 120-port gateways can be "mixed and matched" and stacked to achieve the desired density in a given point of presence. Clarent Gateways support SS7/C7, PRI-ISDN, T1, E1, and PBX connections.

Flexibility – Service Editor, a powerful IVR toolbox, allows comprehensive customization of the voice interface.

Availability – Clarent Gateways provide an optional PSTN fall back if the IP network is unavailable. Redundant power supplies provide a high level of reliability.

Manageable – Standards-based network management support via SNMP, MIB-II, and LanManager. Clarent products have been designed to easily integrate into telecommunications management network (TMN) environments.

Remote management – Clarent Gateways are extremely flexible and can be managed using telnet, SNMP, or Clarent Gateway Controller. Clarent Gateways support SNMP V1 with a comprehensive management information base (MIB). Service providers can set parameters, poll devices for performance statistics and status information, and receive alarms when faults occur. Each Clarent Gateway keeps log files for diagnostics. These log files can be streamed to a customer-defined IP address for centralized diagnostics analysis and troubleshooting. Network administrators can view and control gateways remotely from any Clarent Gateway Controller enabled Windows™ NT computer, and this powerful client application allows the viewing of port statistics and the convenient remote management of ports.



CLARENT®



Specifications

CPU

Single Intel® Pentium III® 600 MHz processor with 256MB RAM

Telephony Interface

Up to four Digital T1/E1 interfaces. Optional BNC connections for 75 ohm E1.

Signaling Protocol

SS7/C7: ITU, ANSI
PRI-ISDN: USNational-2, INS 1500, EuroISDN
Wink Start, MFC-R2, DID and Loop Start

Ethernet Connection

10/100BaseT network interface card with RJ-45 connector

Chassis

Heavy-duty steel
Rack mountable
19" (with mounts) W x 21" D x 3.5" (2u) H
Weight approx. 40 lbs.

Environment

Operating temp: 0° to 40°C
Humidity: 10% to 80%

Power Supplies

Dual hot-swappable, 250W
115VAC 60Hz, or 230VAC 50Hz, or -48VDC

Alarms

Temperature, fan failure, and power supply failure
Molex alarm connector for integration with external alarm systems

Cooling

4 high-volume chassis fans

Drives

1.44MB floppy disk drive
EIDE hard drive
32x CDROM EIDE drive

Keyboards and Mouse

PS/2 keyboard and mouse

Video

Industry standard SVGA

Required Connections

PBX or PSTN connection
10/100BaseT Ethernet connection with RJ-45 cat-5 cable

Customer Supplied Optional Equipment

Rack mount SVGA monitor and cable
Rack mount keyboard/trackball
UPS/Battery backup

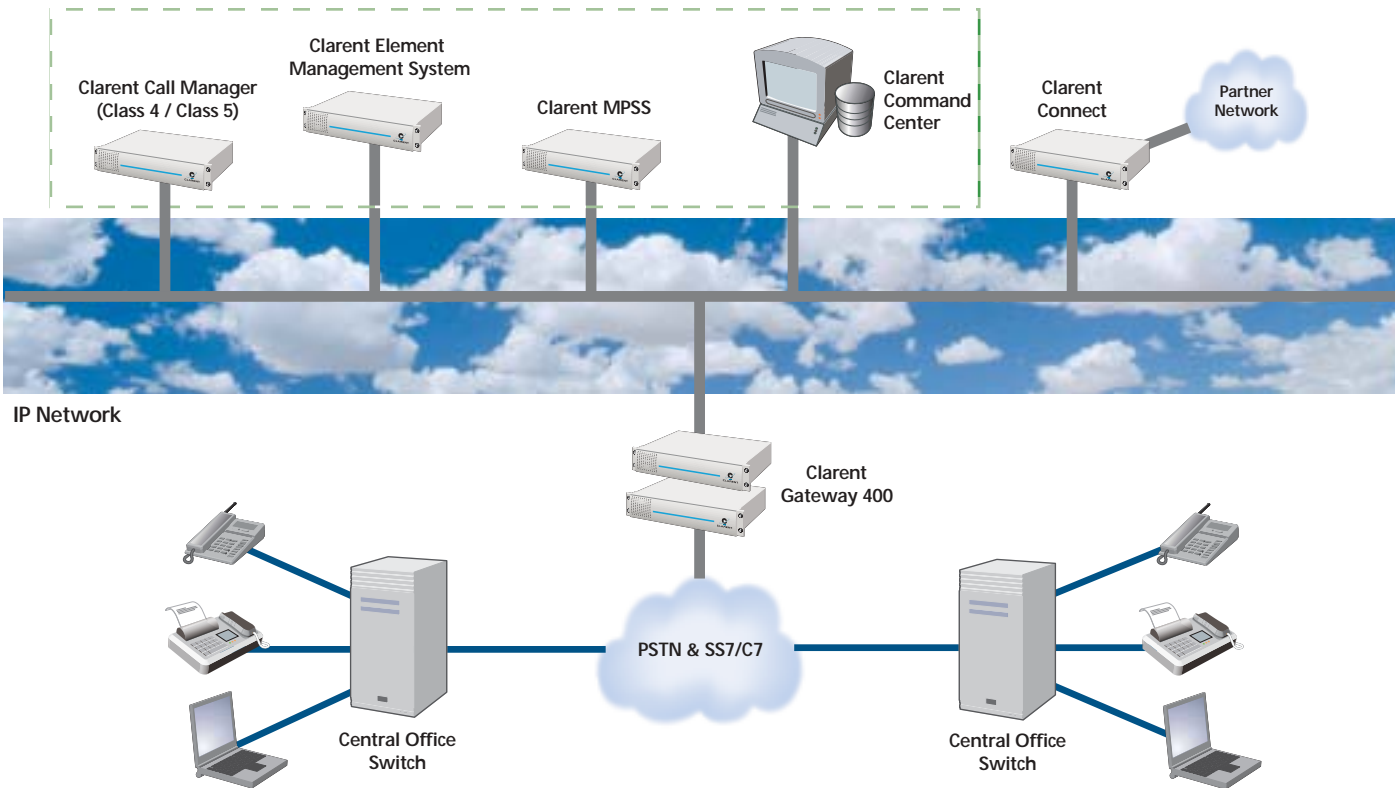
Included Software

Microsoft Windows NT Server 4.0
Symantec PCAnywhere
Clarent Gateway 400 software

Other Products Required for Operation

Clarent Command Center (requires Oracle™, MS SQL Server™, or other ODBC-compliant database)

CLARENT SOFTSWITCH



www.clarent.com



CORPORATE HEADQUARTERS
700 Chesapeake Drive
Redwood City, CA 94063 USA
Tel. 1 888 CLARENT, (1 888 252 7368)
1 650 306 7511
Fax 1 650 306 7512
Email: sales@clarent.com

ASIA PACIFIC
Hong Kong
Tel. 852 2587 8862
Fax 852 2157 0388
Email: sales.hk@clarent.com

EUROPE, MIDDLE EAST, AFRICA
Milton Keynes, UK
Tel. 44 1908 306 500
Fax 44 1908 306 501
Email: sales.eu@clarent.com

Specifications are subject to change without prior notification.

© Copyright 2001 Clarent Corporation. All rights reserved. Clarent, the Clarent logo, Clarent OpenAccess, NetPerformer, DynaStar, Clarent Command Center, Clarent ThroughPacket, Clarent CPG, PowerCell, SkyPerformer, ACTview, Clarent BHG, Clarent Gatekeeper, Clarent Announcement Server and Clarent BHCM are trademarks or registered trademarks of Clarent Corporation in the United States and other jurisdictions. All other trademarks, registered trademarks and service marks are the property of their respective owners. GW400-0901